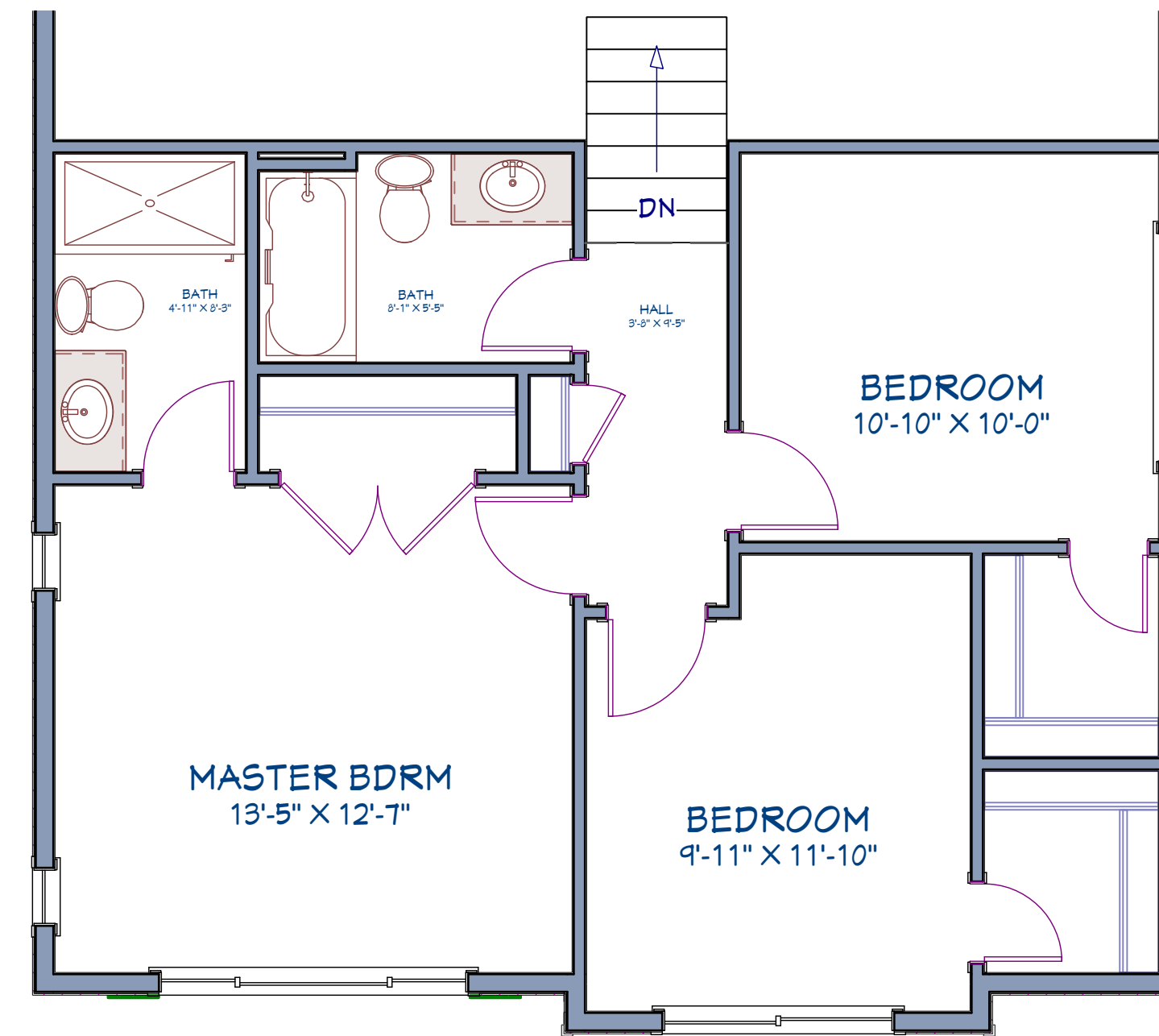
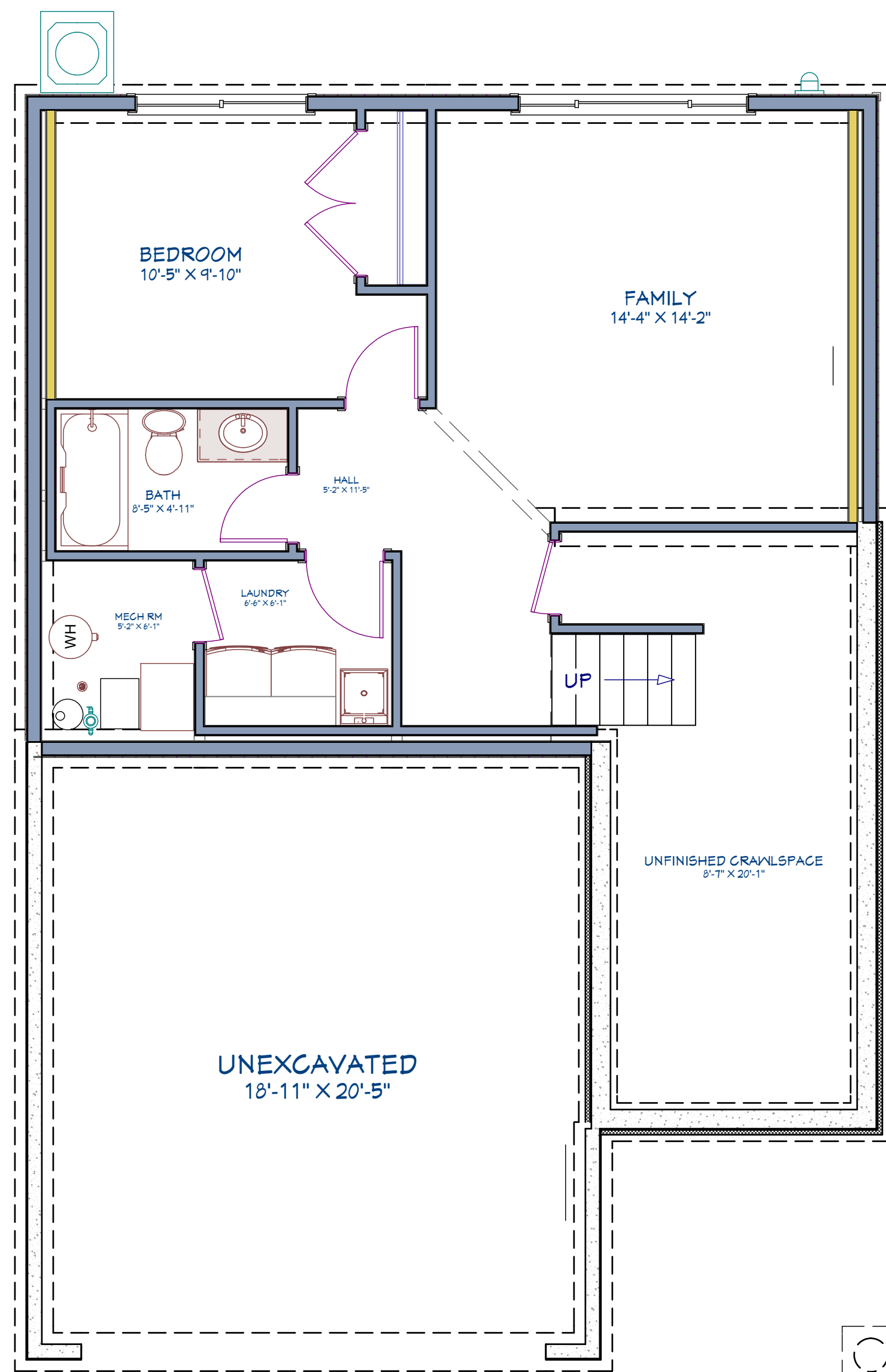


Greenville Plan

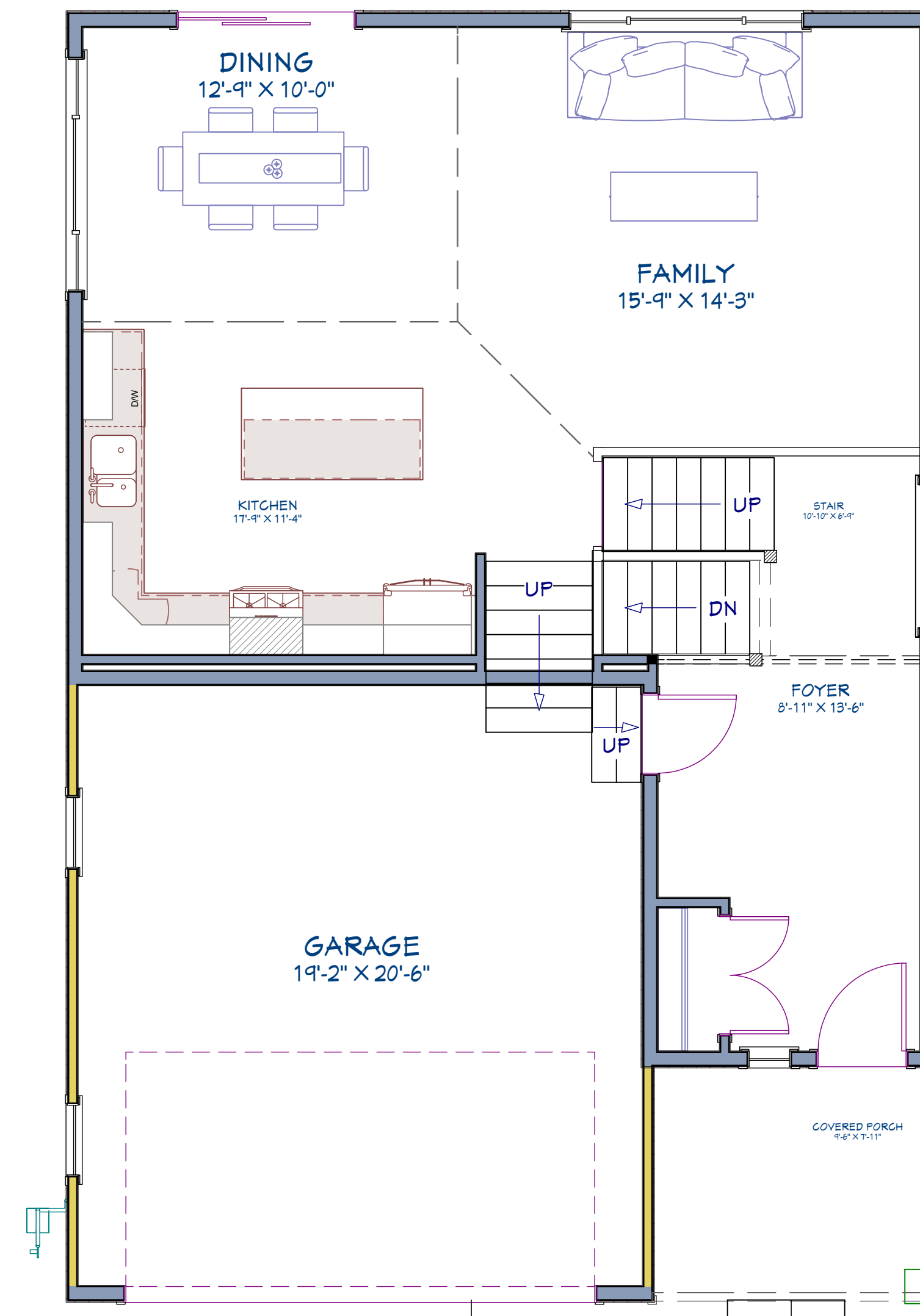
- This plan features 2,145 finished square feet
- 4 Bedrooms
- 3 Bathrooms
- Two Car Attached Garage
- Excellent Open Layout
- Hardwood Floors
- Ceramic Tile Bathroom floors
- Delta Faucets
- Covered porch w/ maintenance free decking
- Maintenance Free Vinyl Exterior Siding
- Stainless Steel Appliances
- Washer & Dryer
- Granite Countertops in Kitchen
- Professionally Designed Landscaping
- Vinyl Windows
- Finished Lookout Basement
- Energy Efficient Green Path Designed Home



Second Floor



Finished Lookout Basement Suite



Garage, Foyer & Main Floor



6421 14th Ave S
Richfield, MN 55423

* More Richfield Sites Available *

Endres
custom homes

7245 S Robert Trail, Inver Grove Heights, MN 55077

